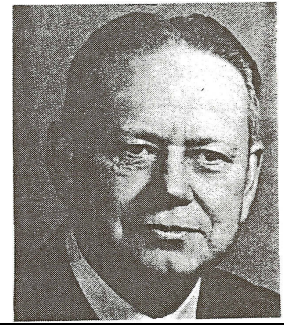


Leslie M. Lowery, FCSI

*“In recognition of your service to the Institute, you are advanced to Fellowship in the Institute on this 31st day of May, 1967.”
Miami, Florida*



LESLIE M. LOWERY was born in Harbor Beach, Michigan in 1903. He attended the University of Michigan, graduating with a BS in Architectural Engineering in 1925.

Lowery began his career in 1925 with Smith, Hinchman & Grylls. In 1929 he began working as a structural engineer with the firm of Parsons, Clapp, Brinkerhoff & Douglas. He spent the years between 1931 and 1934 working for the Michigan Utilities Commission. In 1934 he began a five year association with the Dow Chemical Company as an estimator in their construction department. In 1940 Lowery began a twenty one year association as a specification writer with the firm of Giffels & Valet, Inc. From 1962 until his retirement

he worked for the Detroit Board of Education as a project administrator for new construction and remodeling.

In 1955 when a group of CSI members began efforts to form a chapter in Detroit, Lowery enthusiastically joined the group as a charter member. He later served as chapter president.

In 1961 Lowery was elected to a two year term on CSI's Board as Director from then Region 6.

CSI Membership

Detroit Chapter

Institute Offices, Committees

Institute Director, 1961-1962

Region Offices, Committees

Chapter Offices, Committees

President, 1958-1960

Awards

Institute Director's Plaque, 1962

Keep above titles in same order. Under each heading, list in reverse chronological order. Delete unused categories.

Paste text here to start.